



MODELO / MODEL

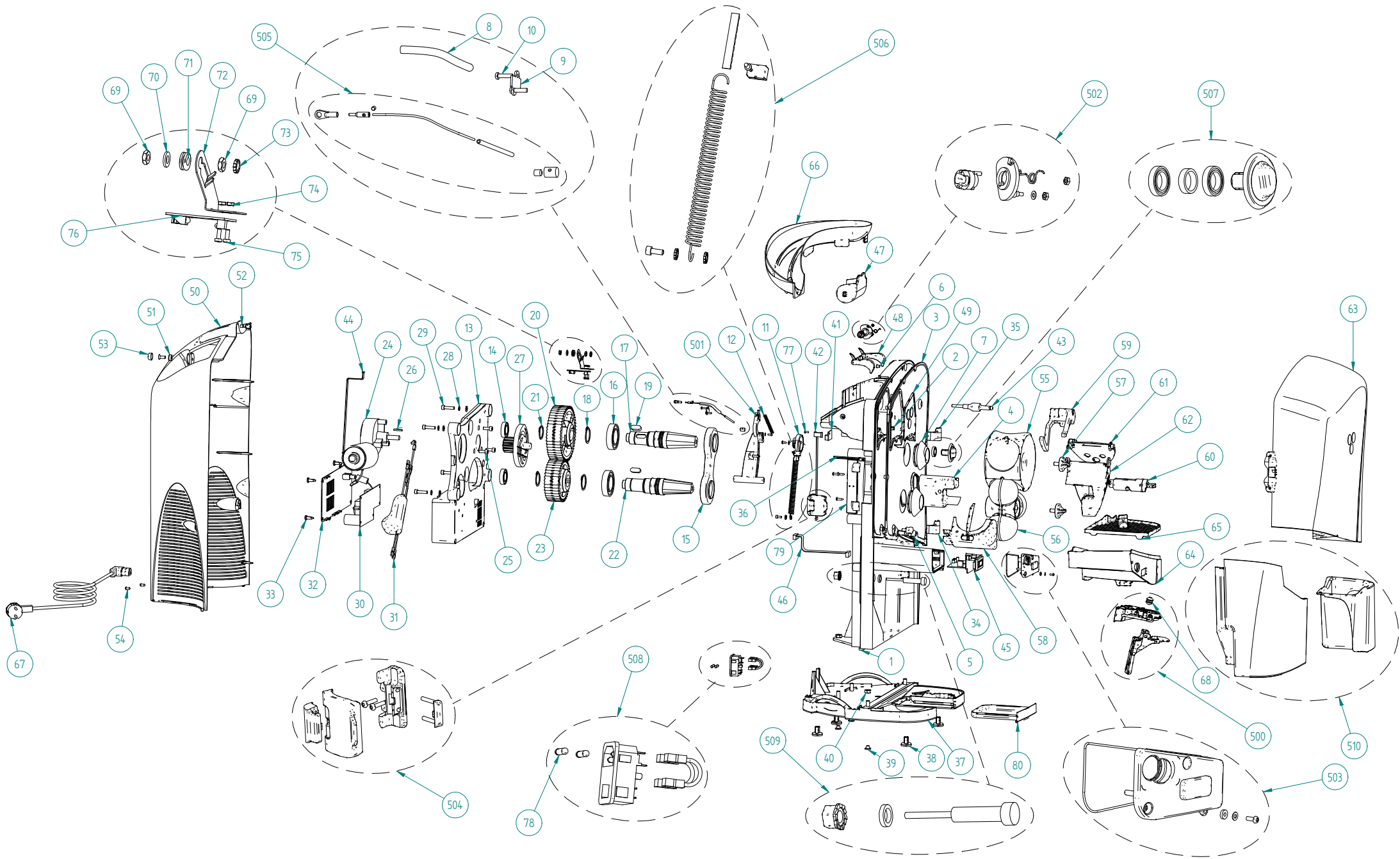
**MINEX**

Nr. Desde/from 392249 hasta/to ...

**Rev 05**

INDICE / INDEX

Vista explosionada/Exploded view.....	Pag 2
Lista de piezas/ Part list.....	Pag 3 - 7
Esquema electrónico/Electronic diagram .....	Pag 8



NÚMERO DE PIEZA PART NUMBER	REFERENCIA REFERENCE	COMPUESTO POR COMPOSED BY	DESCRIPCIÓN	DESCRIPTION	CANTIDAD POR MÁQUINA QUANTITY PER MACHINE	LOTE DISTRIBUCION DISTRIBUTION LOT
1	33.1034.000		Modulo Bastidor MX	Plastic frame module MX	1	1
		<a href="#">1 Ud / 210.0038.202</a>	Bastidor MX	Plastic frame MX		
		<a href="#">2 Ud / 225.3320.000</a>	Soporte cuña extractora	Pell ejectors pivot holders		
		<a href="#">4 Ud / 180.0038.000</a>	Tareinsert autoroscante	Tareinsert self-screwing M6 brass		
		<a href="#">1 Ud/ 13.961.100</a>	Frontal inox con juntas MX	S.S. Front plate w/rings MX		
		<a href="#">1 Ud / 210.0033.002</a>	Soporte fijo volteador MX	Twirler blade bracket MX		
		<a href="#">1 Ud / 210.0029.001</a>	Arrastre exterior	Outer pulling dispenser		
		<a href="#">1 Ud / 210.0023.001</a>	Arrastre interior MX	Pulling dispenser MX		
		<a href="#">1 Ud / 210.0045.000</a>	Resorte arrastre alimentador MX	Feeder dispenser spring MX		
		<a href="#">2 Ud / 100.1901.003</a>	Tuerca DIN 934 M3 I	DIN 934 M3 I nut		
		<a href="#">1 Ud / 140.0202.015</a>	Rodamiento 6802 2RS	Bearing 6802 2RS		
		<a href="#">2 Ud/ 210.0018.000</a>	Eje puerta MX	MX feeder door pivot		
		<a href="#">1 Ud /13.967.000</a>	Tubo guia MX	Steel cable guide tube		
		<a href="#">1 Ud / 13.964.100</a>	Kit cable rotula MX	Steel feeder cable set MX		
		<a href="#">3 Ud/ 100.0919.034</a>	Tornillo DIN 7981 B 3,5 x 13 Inox	DIN 7981 B 3,5 x 13 I screw		
		<a href="#">11 Ud / 180.0032.000</a>	Expansionador Heyco 072 5899	Expansible thread heyco		
		<a href="#">1 Ud / 210.0074.000</a>	Juego de juntas MX	MX Joint set		
		<a href="#">1 Ud / 105.0910.003</a>	Arandela DIN 125 D3 I	DIN 125 D3 I washer		
	<a href="#">1 Ud / 13.967.000</a>	Tubo guia MX	Steel cable guide tube			
	<a href="#">1 Ud / 180.0062.000</a>	Tareinsert M4	M4 Insert			
2	210.0018.000		Eje puerta MX	Feeder door pivot MX	2	1
3	13.961.100		Frontal inox con juntas MX	S.S. Front plate w/rings MX	1	1
4	33.1032.000		Soporte fijo volteador MX	MX Twirler blade bracket	1	1
		<a href="#">1 Ud / 210.0033.103</a>	Soporte fijo MX	MX Twirler blade bracket		
		<a href="#">3 Ud / 100.0919.034</a>	Tornillo DIN 7981 B 3,5x16 I	DIN 7981 B Screw 3,5x16 I		
5	33.0006.000		Kit soportes pivotes cuñas ext	Pell ejectors pivot holders kit	1	25
		<a href="#">2 Ud / 225.3320.000</a>	Soporte cuña extractora	Pell ejectors pivot holders		
6	180.0032.000		Expansionador Heyco 072 5899	Expansible thread heyco	12	100
7	33.1043.000		Reten eje silicona MX	Silicone Shaft Fastener MX	2	10
		<a href="#">2 Ud / 210.0002.002</a>	Reten eje silicona MX	Silicone Shaft Fastener MX		
8	13.967.000		Tubo guia MX	Steel cable guide tube	1	1
9	210.0075.000		Reten cable MX	MX Cable fastener	1	1

10	100.0980.010		Tor para plas RFX 81T 3 x 12	RFX 81T 3x12 screw	2	1
11	210.0025.000		Rotor MX	Twirler blade rotor	1	1
12	210.0042.000		Correa dentada balancin MX	Rocker arm belt MX	1	1
13	13.908.000		Soporte caja electrónica	Electronic box holder	1	1
14	140.0202.020		Rodamiento 61904 2RS	Bearing 61904 2RS	2	1
15	210.0046.003		Refuerzo en ocho	Bearing "8" housing MX	1	1
16	33.0011.000		Kit rodamientos 6007	6007 2RS bearing kit	1	16
		<a href="#">2 Ud / 140.0201.035</a>	Rodamiento 6007 2RS	6007 2RS bearing		
17	210.0041.002		Eje tambor hembra MX	Upper pressing shaft MX	1	1
18	130.0012.035		Anillo de seguridad DIN 471 E-35	Security ring DIN 471 E-35	2	1
19	115.0000.015		Chaveta 10x8x25	Bolt 10 x 8 x 25	2	1
20	210.3301.002		Piñon grande plastico	Big plastic gear	1	1
21	130.0012.030		Anillo de seguridad DIN 471 E-30	Security ring DIN 471 E-30	2	1
22	210.0040.002		Eje tambor macho	Lower pressing shaft MX	1	1
23	210.3302.001		Piñon pequeño plastico	Small plastic gear	1	1
24	33.1024.000		Motor MX	Motor MX	1	1
		<a href="#">1Ud / 160.0132.001</a>	Motoreductor Bosch MX	MX Bosch motor+Gear Box		
		<a href="#">2Ud / 155.0000.003</a>	Pin para conector aereo macho MX	For male quick connector pin		
		<a href="#">1Ud / 155.0000.002</a>	Conector aereo macho motor MX	Male quick connector motor		
		<a href="#">1Ud / 115.0000.002</a>	Chaveta 3X3X22	Bolt 3 x 3 x 22		
25	100.0903.106		Tornillo DIN 912 M6 x 16 Inox	DIN 912 M6 X 16 l screw	3	1
26	115.0000.002		Chaveta 3X3X22	Bolt 3 x 3 x 22	1	1
27	33.1048.000		Leva piñon MX	Gear Lever MX	1	1
28	105.0911.006		Arandela DIN 127 D6 l.	DIN 127 D6 l washer	4	1
29	100.0903.108		Tornillo DIN 912 M6 x 25 Inox	DIN 912 M6 X 25 l screw	4	1
30	33.1025.000		Modulo potencia MX	Main control board MX	1	5
31	13.966.005		Cables y filtro mod de potencia	Electrical inlet filter MX	1	1
32	210.0065.000		Tapa soporte caja electrónica	Electronic box holder cover	1	1
33	100.2002.000		Tornillo especial Heyco 0744130	Special screw Heyco 0744130	4	1
34	210.0011.100		Bisagra B MX	Plastic hinge "B" MX	1	1
35	210.0054.100		Bisagra A MX	Plastic hinge "A" MX	1	1
36	33.1055.000		Micro de seguridad MX	MX Security micro-switch	1	10
37	13.968.104		Conjunto Base MX	Base set MX	1	1
		<a href="#">1 Ud / 210.0012.102</a>	Base MX	MX Base		
		<a href="#">1 Ud / 210.0049.000</a>	Tapa base MX	MX Base cover		
		<a href="#">7 Ud / 100.0919.025</a>	Tornillo DIN 7981 B 2,9 x 13 Inox	DIN 7981 B 2,9 x 13 l screw		
		<a href="#">4 Ud / 100.0909.130</a>	Tornillo DIN 7991 M8 x 35 l	DIN 7991 M8 x 35 l screw		
38	32.1025.000		Pies MX	Feet MX	4	30
39	180.0033.000		Tapón	GPN 300 F3 plastic plug	4	1
40	100.1901.008		Tuerca DIN 934 M8 Inox	DIN 934 M8 l nut	4	1
41	13.613.100		Barrera alimentador MX	Feeder barrier board MX	1	1
42	33.1053.000		Bus Mod Potencia-Mod Barrera	Power supply - Barrier module bus	1	10
43	210.0044.101		Eje retenedor MX	Support pivot shaft	1	1

44	33.1054.000		BUS Mod Potencia-Mod Posicionamiento	Power supply - Position module bus	1	10
45	33.1033.000		Modulo botonera MX	Keyboard module MX	1	5
		1 Ud / 210.0076.000	Actuador pulsador ON/OFF MX	ON_OFF Minex button		
		1 Ud / 13.611.101	Modulo botonera MX	Keyboard module MX		
46	33.1052.000		Bus Mod. Potencia - Mod. Botonera	Power supply - Keyboard bus	1	15
47	33.1003.000		Dosificador MX	Dispenser MX	1	24
48	33.1002.000		Contrapeso MX	Counterweight MX	1	20
49	33.1001.000		Puerta alimentador MX	Feeder door MX	1	48
50	33.1051.000		Tapa trasera grafito MX	Grafite Plastic rear cover MX	1	1
51	180.0035.000		Arandela Snacap M6 VZK Gris	M6 Snacap washer	4	1
52	100.0909.106		Tornillo DIN 7991 M-6x15 l	DIN 7991 M6 X 15 l screw	4	1
53	180.0034.000		Tapón Snapcap M6 negro	Black snapcap plug	4	1
54	180.0039.000		Expansionador DRR011-BLK	Expansible thread DRR011-BLK	2	1
55	33.1015.000		Tambor hembra plastico MX	Upper pressing unit MX	1	1
56	33.0031.000		Tambor macho plástico	Orange lower pressing unit	1	1
57	33.0067.000		Kit volantes polijunta	Securing knobs + rubber joint	2	2
		2 Ud / 200.3306.100	Volante plastico INY.	Plastic securing knob		
		2 Ud / 171.3407.000	Junta silicona 34X7X1,5	Silicone joint 34X7X1,5		
58	33.0002.000		Cuña extractora izquierda	Left peel ejector	1	48
59	33.1005.100		Retenedor V2.0 MX	V 2.0 Bolcker MX	1	12
60	33.1039.000		Bloqueo cuchilla MX	Twirler blade blocker MX	1	1
61	33.1040.000		Cuchilla volteador inox MX	Stainless steel Twirler blade MX	1	5
62	33.1041.000		Soporte cuchilla volteador MX	Twirler blade support MX	1	1
63	33.1006.000		Cubierta MX	Cover MX	1	5
64	33.1063.000		Cubeta zumo MX 2010	MX 2010 Juice container	1	1
65	33.1062.000		Filtro cubeta zumo MX 2010	MX 2010 Juice container filter	1	1
66	33.1004.000		Rampa alimentador MX	Feeder ramp MX	1	1
67	155.1140.000		Cable Schuko-IEC acodada (1)	MX schuko 90° p.supply cable (1)	1	1
	155.1142.000		Cable GB-IEC acodada (2)	MX GB 90° power supply cable (2)	1	1
	155.1141.000		Cable UL-IEC acodada (3)	MX UL 90° power supply cable (3)	1	1
	155.1160.000		Cable AUS-IEC acodada (4)	MX AUS-IEC power supply cable (4)	1	1
68	33.1066.000		Junta grifo MX 2010	MX 2010 Faucet seal	1	10
69	100.1937.011		Tuerca DIN 439 MF M6 l	DIN 439MF Nut M6 l	1	1
70	105.0910.006		Arandela DIN 125 M6 Forma A	DIN 125 D6 l washer	5	1
71	155.0096.000		Pasacables D 6.4	Cable guide D 6.4	1	1
72	200.0360.000		Chapa sujeción mod. Posicion	Position module holder sheet	1	1
73	105.0915.006		Arandela DIN 6798A D6l	DIN 6798A Washer D6l	1	1
74	100.1901.003		Tuerca DIN 934 M-3	DIN 934 M-3 Nut	2	1
75	100.0935.043		Tornillo DIN 7985 M3x8 l	DIN 7985 Screw M3x8 l	2	1
76	33.1049.000		Modulo posicionamiento MX	Stance offset board MX	1	1
77	100.0980.009		Tornillo para plas RFX 81T 3 x 8	Rfx 81T 3 x 8 screw	8	1
78	220.0067.000		Fusible 5 X 20 6 AMP	5 X 20 6 AMP fuse	2	5
79	33.1031.000		Auxiliar cierre MX	Front cover lock bracket MX	1	1

80	33.1011.000		Bandeja goteo MX	Brip Tray MX	1	48
500	33.1064.000		Kit grifo MX 2010	MX 2010 Faucet kit	1	1
		1 Ud / 210.0131.000	Grifo MX V 3.0	MX V 3.0 Faucet		
		1 Ud / 210.0134.000	Junta ent-sal zumo V 3.0	V 3.0 In-out juice seal		
		1 Ud / 210.0137.000	Pulsador vaso MX V 3.0	MX V 3.0 Glass puller		
501	33.1030.000		Balancin MX	Rocker arm MX	1	5
		1 Ud / 210.0030.002	Balancin MX	Rocker arm MX		
		1 Ud / 105.0910.003	Arandela DIN 125 D3 I	DIN 125 D3 I washer		
		1 Ud / 100.0980.009	Tor para plas RFX 81T 3 x 8	Rfx 81T 3 x 8 screw		
502	33.1026.000		Kit arrastre dosificador MX	MX dispenser driver	1	10
		1 Ud / 210.0023.001	Arrastre interior MX	Pulling dispenser MX		
		1 Ud / 210.0029.001	Arrastre exterior	Outer pulling dispenser		
		1 Ud / 210.0045.000	Resorte arrastre alimentador MX	Feeder dispenser spring MX		
		2 Ud / 100.1901.003	Tuerca DIN 934 M3 I	DIN 934 M3 I nut		
		1 Ud / 105.0910.003	Arandela DIN 125 D3 I	DIN 125 D3 I washer		
		1 Ud / 105.0910.004	Arandela DIN 125 D4 I	DIN 125 D4 I washer		
		1 Ud / 210.0088.000	Junta plana silicona 7,5 x 3 x 2	Silicone gasket 7,5 x 3 x 2		
503	33.1046.000		Kit tapa botonera MX	Kit keyboard cover MX	1	10
		1 Ud / 210.0027.001	Tapa botonera MX	Keyboard cover MX		
		1 Ud / 210.0076.000	Actuador pulsador ON/OFF MX	ON_OFF Minex button		
		1 Ud / 210.0053.000	Hilo torico	Keyboardcover ring		
		2 Ud / 105.0910.003	Arandela DIN 125 D3 L	DIN 125 D3 I washer		
		3 Ud / 210.0088.000	Junta plana silicona 7,5 x 3 x 2	Silicone gasket 7,5 x 3 x 2		
		3 Ud / 100.0980.009	Tornillo RFX 81T 3 x 8	Rfx 81T 3 x 8 screw		
504	33.1042.000		Kit cierre MX	Kit lock MX	1	1
		1 Ud / 210.0086.000	Cierre cubierta plástico MX	Front cover lock MX		
		1 Ud / 210.0087.000	Base cierre cubierta MX	Front cover lock holder MX		
		2 Ud / 100.0980.010	Tornillo RFX 81T 3 x 12	Screw RFX 81T 3 x 12		
505	33.1047.000		Kit cable Alim.-Balancin MX	Steel feeder cable set MX	1	15
		2 Ud / 210.0088.000	Junta plana silicona 3x7.5x2	Silicone flat joint 3x7,5x2		
		2 Ud / 100.1901.003	Tuerca DIN 934 M-3 I.	DIN 934 m-3L nut		
		1 Ud / 210.0055.000	Rotula	Articulation KYEH45		
		1 Ud / 210.0056.002	Puntera roscada	Threaded terminal CY180031		
		1 Ud / 210.0058.000	Cable de acero	Steel cable 19H X 0,3 MM		
		1 Ud / 210.0059.000	Funda plástico	Plastic cover 3,3 X 2		
		1 Ud / 210.0057.001	Puntera prisionero cable	Screw cable terminal		
	1 Ud / 100.0927.081	Prisionero allen DIN 916 M-5x5 I	DIN 916 M-5x5L allen setscrew			
506	33.1067.000		Kit muelle tensor MX 2010	MX 2010 Tension spring kit	1	1
		1 Ud / 210.0140.000	Muelle eje rotor	Rotor shaft spring		
		1 Ud / 210.0098.000	Brida correa MX	MX Belt bridle		
		1 Ud / 210.0043.000	Correa dentada peso MX	MX Weight belt		
		1 Ud / 100.0903.064	Tornillo DIN 912 M-4x10 I	DIN 912 Screw M-4x10 I		
		1 Ud / 105.0915.004	Arandela DIN 6798A D4I	DIN 6798A Washer D4I		

507	33.1068.000		Kit eje rotor MX 2010	MX 2010 Rotor shaft	1	1
		<a href="#">1 Ud / 13.931.100</a>	Eje rotor MX V3.0	Rotor shaft MX V3.0		
		<a href="#">1 Ud / 210.0089.000</a>	Espaciador rodamientos MX	MX Bearings spacer		
		<a href="#">2 Ud / 140.0902.015</a>	Rodamiento 6802 2RS Inox	Bearing 6802 2RS		
		<a href="#">1 Ud / 105.0910.004</a>	Arandela DIN 125 M4 Inox	DIN 125 Washer M4 Inox		
	<a href="#">1 Ud / 100.0919.018</a>	Tornillo DIN 7981 B 3,5 x 9,5 Inox	DIN 7981B Screw 3,5 x 9,5 Inox			
508	33.1059.000		Kit base enchufe IEC	IEC Socket base kit	1	1
		<a href="#">1 Ud / 155.1120.000</a>	Base conexión eléctrica	Power supply socket		
		<a href="#">2 Ud / 13.973.001</a>	Cable puente MX	Electrical Jumper MX		
	<a href="#">2 Ud / 220.0067.000</a>	Fusible 5 X 20 6 AMP	5 X 20 6 AMP fuse			
509	33.1056.000		Detector Mag. Seguridad MX 600mm	MX Mag. Security detector 600mm	1	10
		<a href="#">1 Ud / 155.0056.100</a>	Detector Magnético MX	Magnetic detector MX		
		<a href="#">1 Ud / 210.0088.000</a>	Junta Plana silicona 3x7 / 5x2	Flat silicone joint 3x7 / 5x2		
		<a href="#">1 Ud / 100.1601.012</a>	Tuerca M-12 Nylon	Nylon M-12 nut		
510	34.3013.000		COLOR KIT WHITE (*)	COLOR KIT WHITE (*)	1	1
	34.3023.000		COLOR KIT RUBY RED (*)	COLOR KIT RUBY RED (*)	1	1
	34.3033.000		COLOR KIT GREEN (*)	COLOR KIT GREEN (*)	1	1
	34.3043.000		COLOR KIT BLUE (*)	COLOR KIT BLUE (*)	1	1
	34.3053.000		COLOR KIT SILVER (*)	COLOR KIT SILVER (*)	1	1
	34.3063.000		COLOR KIT GRAPHITE (*)	COLOR KIT GRAPHITE (*)	1	1
	34.3073.000		COLOR KIT BRONZE (*)	COLOR KIT BRONZE (*)	1	1
	34.3083.000		COLOR KIT BLACK (*)	COLOR KIT BLACK (*)	1	1
	34.3093.000		COLOR KIT ORANGE (*)	COLOR KIT ORANGE (*)	1	1
	34.3103.000		COLOR KIT LIGHT GREEN (*)	COLOR KIT LIGHT GREEN (*)	1	1
	34.3113.000		COLOR KIT LIGHT BLUE (*)	COLOR KIT LIGHT BLUE (*)	1	1
	34.3123.000		COLOR KIT GREY (*)	COLOR KIT GREY (*)	1	1

(1) MINEX

(2) MINEX MODELO GB / GB MODELS

(3) MINEX MODELO UL / UL MODELS

(4) MINEX MODELO AUS / AUS MODELS

(\*) KIT COMPUESTO POR JARRA Y CUBETA / KIT COMPOSED BY PEEL BUCKET AND JAR

